

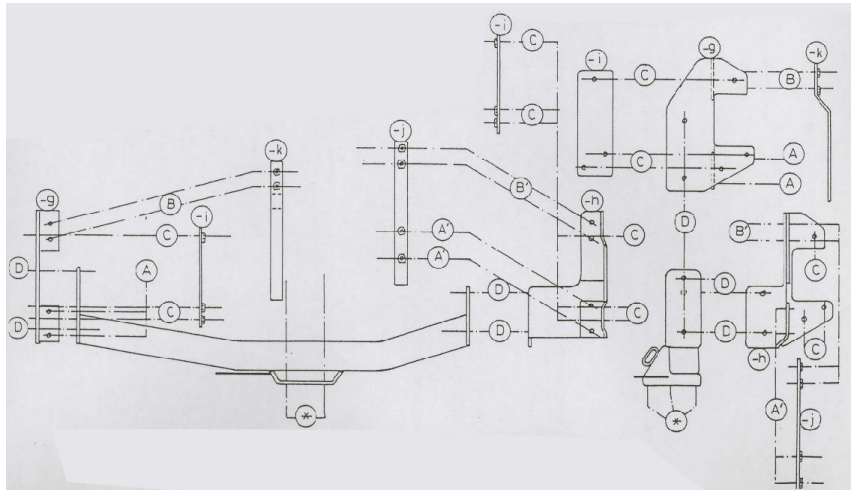


Toyota Landcruiser 80 wagon '96-

2004 -

Ref. 0563

1. Disassemble towing loop rear left. Take away spare wheel and bumper pieces.
2. Place mounting pieces –i,-j en –k in chassis through openings in the back.
3. Place mounting pieces –g and –h with (C) against outer side of the chassis with points (A-A') and (B-B') on provided holes. Points (A) fit on holes provided with thread. Screw in all bolts that go through points that involve mounting pieces –i,-j and –k but do not screw tightly.
4. Reassemble Bumper pieces.
5. Place towbar with points (D) on formerly placed mounting pieces –g en –h and apply bolts. Mount (*) and tighten everything up firmly.



1 towbar ref. 0563

1 ball 50V (83x56)	(*)
4 bolts with nuts M10-40	(*)
4 security washers M10	(*)
2 bolts with nuts M14-40	(D)
2 bolts M14-40	(D')
4 bolts M12-45	(A'-B')
8 bolts M12-35	(B-C)
2 bolts M12-35-1.25	(A)
1 mounting piece –g	(A)
1 mounting piece –h	(D)
2 mounting pieces –i	(C)
1 mounting piece –j	(A'-B')
1 mounting piece –k	(B)
14 security washers M12	(A-A'-B-B'-C)
4 security washers M14	(D-D')

N.B.

Voor de maximum toegestane massa welke uw voertuig mag trekken dient U uw dealer te raadplegen.

Verwijder eventueel de bitumenlaag op de bevestigingsplaats van de trekhaak.

Opgepast bij het boren dat men geen remleiding, elektriciteitsdraden of brandstofleidingen beschadigt.